

# Overview of Year One and Year Three Reports

Due to NWCCU by Fall 2011  
and Fall 2012 respectively

# An NWCCU accredited institution:

- Has a clear and appropriate mission;
- Has the potential to fulfill its mission;
- Is substantially fulfilling its mission; and
- Is projected to continue to do so.

# Revised Standards

- Standard One:
  - Mission, Core Themes, and Expectations
  
- Standard Two:
  - Resources and Capacity
  
- Standard Three:
  - Planning and Implementation
  
- Standard Four:
  - Effectiveness and Improvement
  
- Standard Five:
  - Mission Fulfillment, Adaptation, and Sustainability

# Standard One:

## Mission, Core Themes, and Expectations

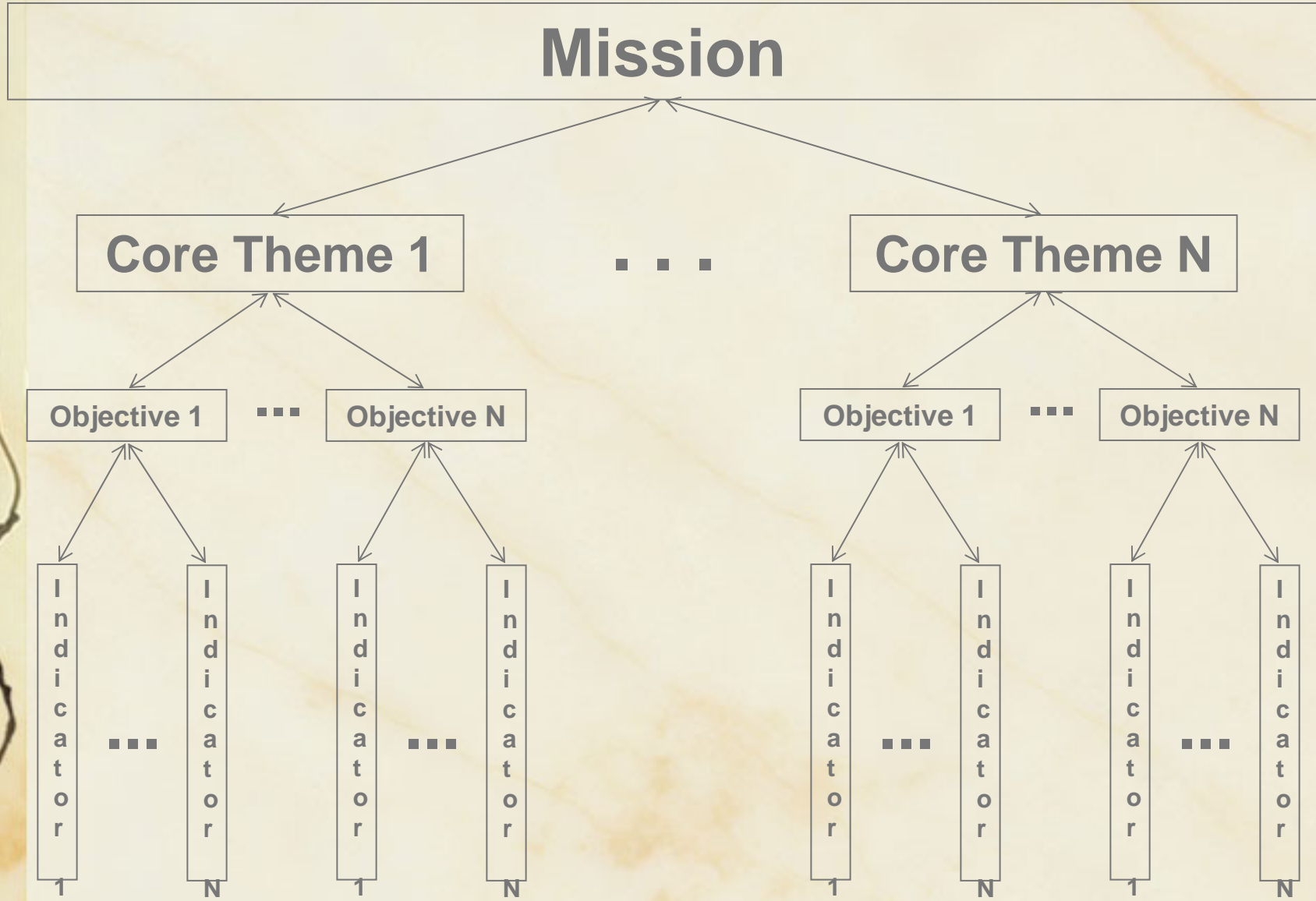
**Examines institutional purpose and intentions based on a clear statement of institutional mission, articulation of mission fulfillment, and identification of mission core themes complete with objectives and assessable indicators of achievement of those objectives.**

# Standard One:

## Mission, Core Themes, and Expectations

***A core theme is a manifestation of a fundamental aspect of institutional mission with overarching objectives that guide planning for contributing programs and services, development of capacity, application of resources to accomplish those objectives, and assessment of achievements of those objectives. Collectively, the core themes represent the institution's interpretation of its mission and translation of that interpretation into practice.***

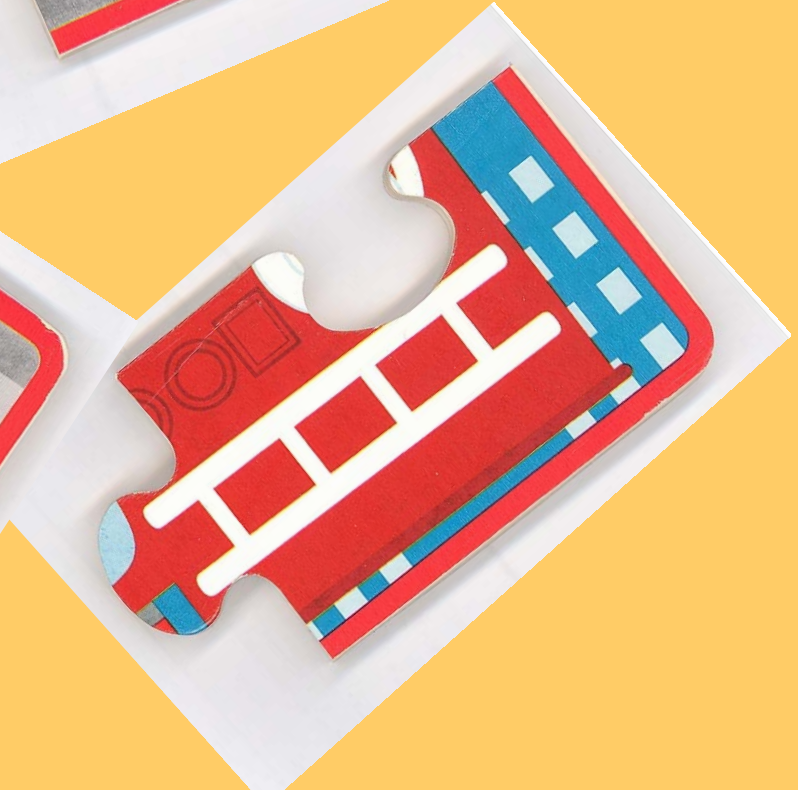




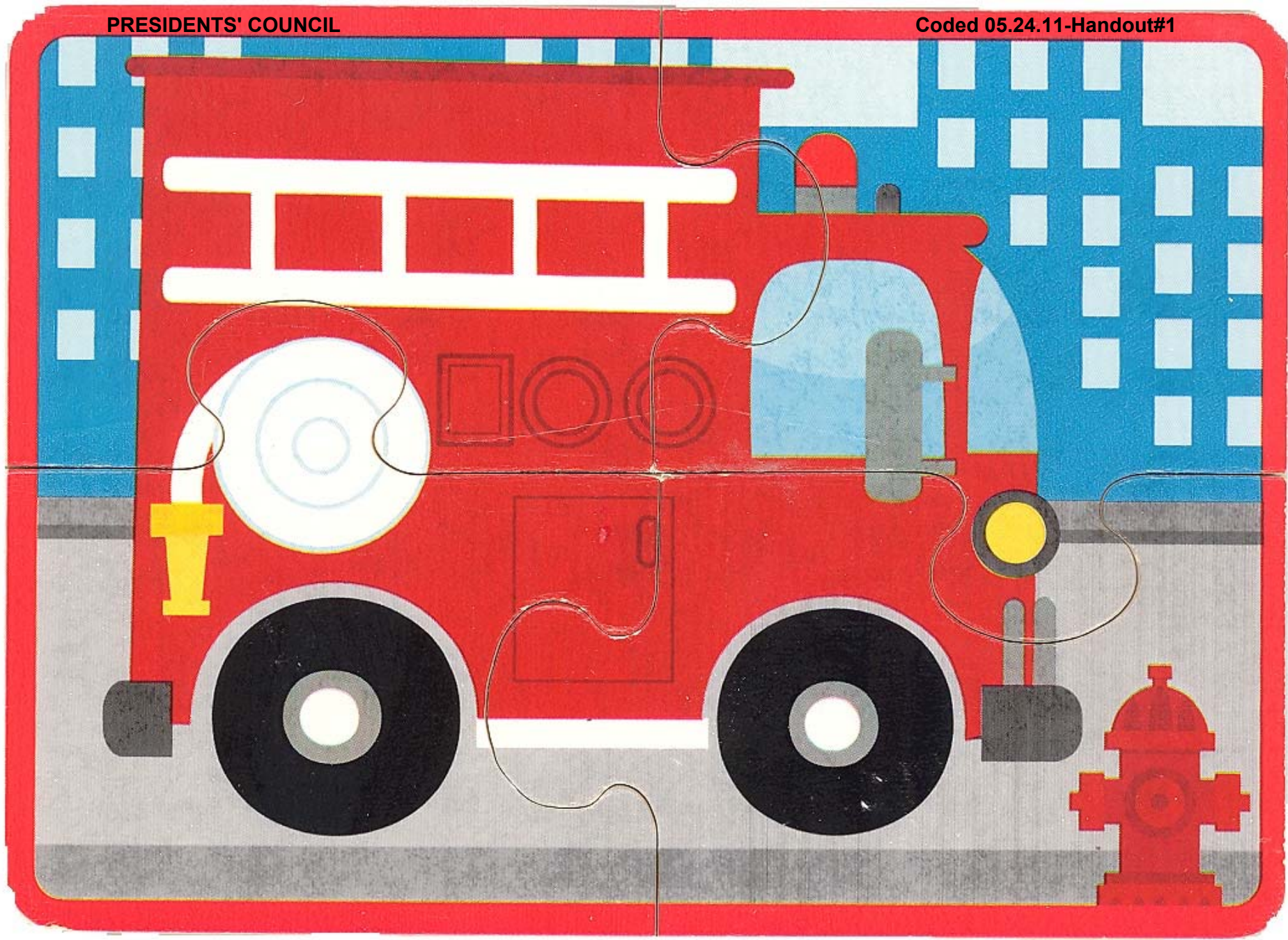
# Standard Two

## Resources and Capacity









**Governance**

**Human Resources**

**Education Resources**

**Student Support Resources**

**Library and Information Resources**

**Financial Resources**

**Physical and Technological Infrastructure**

**Core Theme 1**

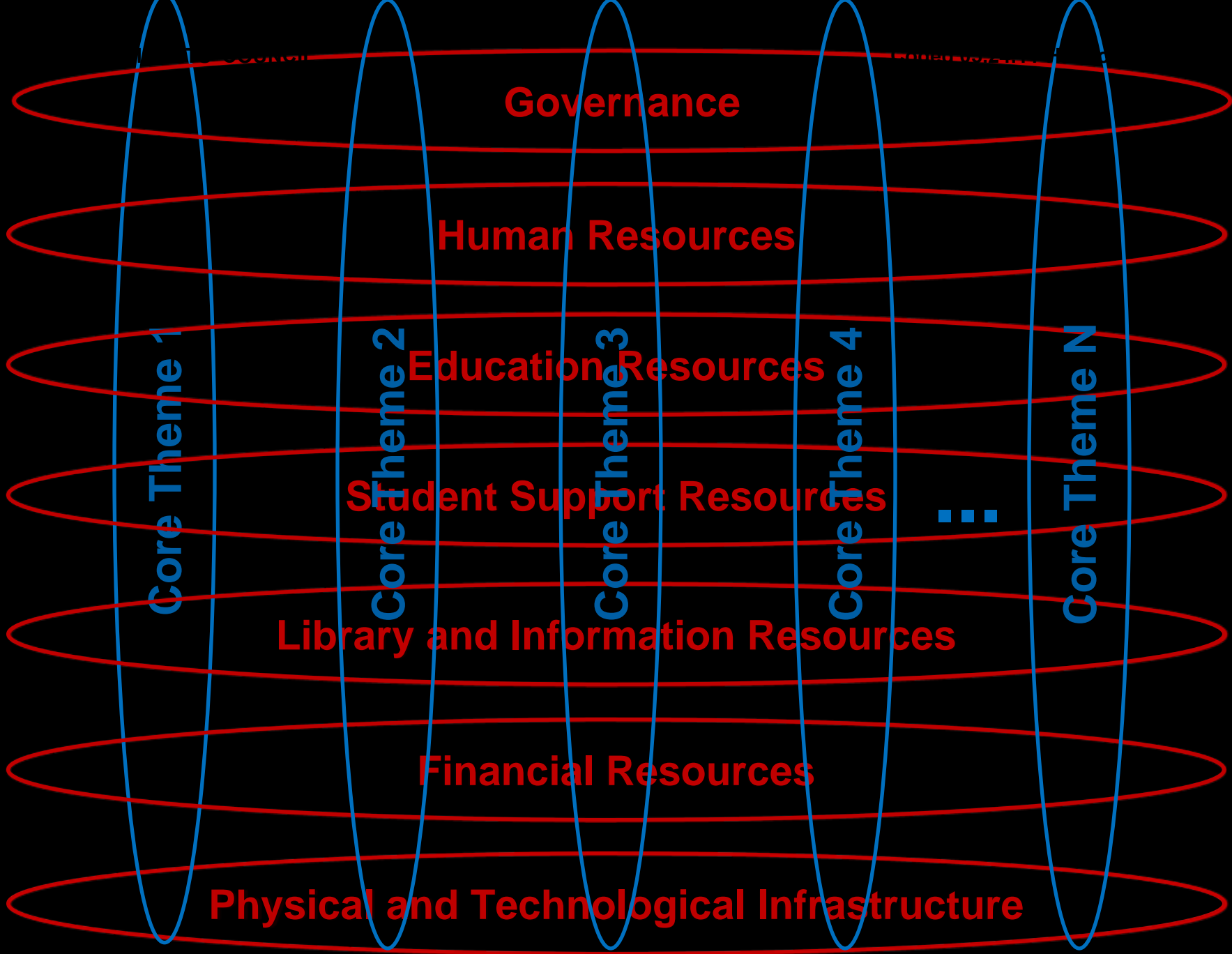
**Core Theme 2**

**Core Theme 3**

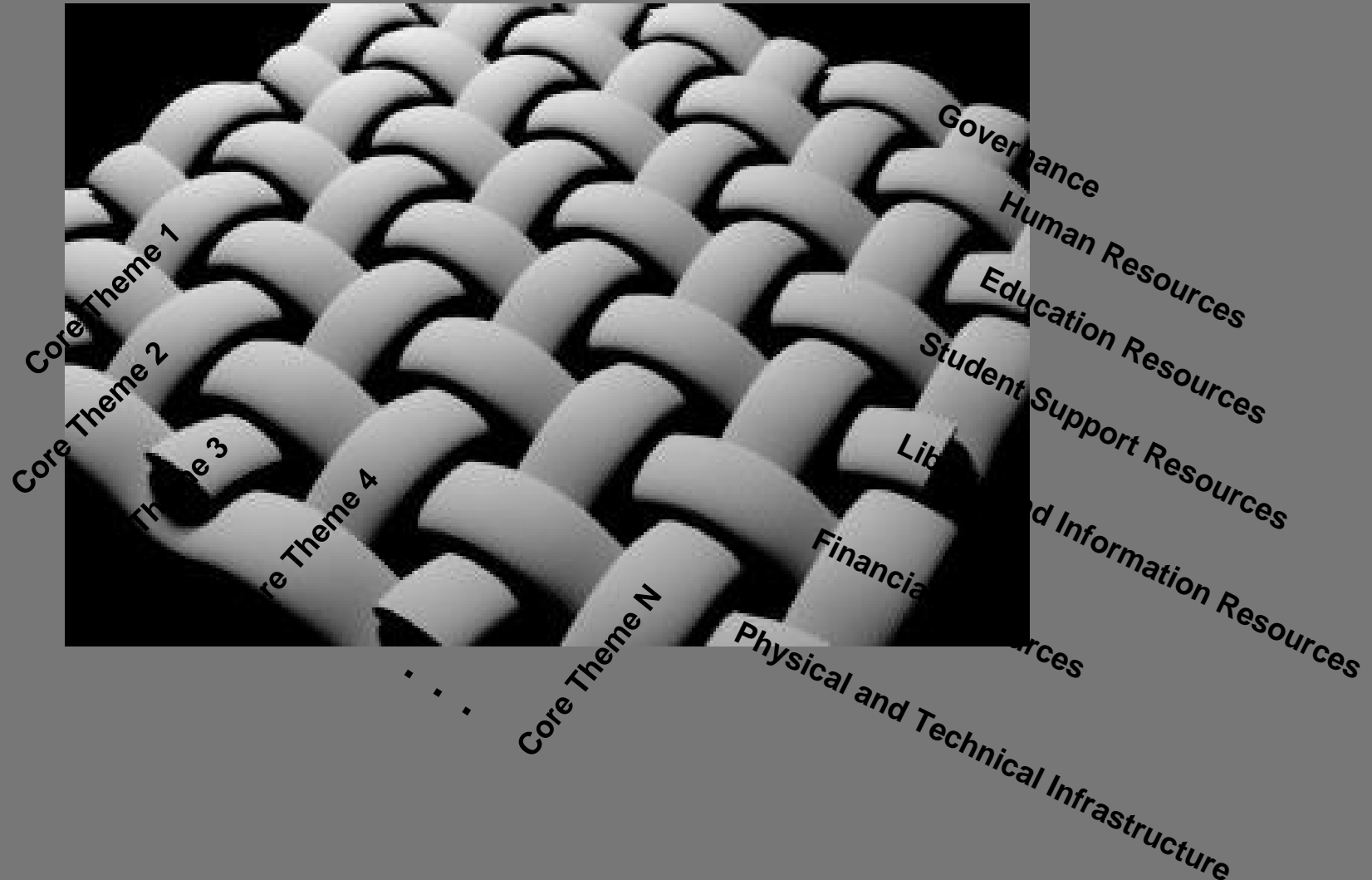
**Core Theme 4**

**Core Theme N**

**⋮**



# Weave





# Evaluation Cycle

Year	Primary Focus	Event
1	<b>Standard One:</b> Mission, Core Themes, and Expectations	<b>Year One Self-Evaluation Report (Standard One)</b> No Visit; Evaluator Panel Reviews Standard One; Peer-Evaluation Report forwarded to Institution and Board.
3	<b>Standard Two:</b> Resources and Capacity	<b>Year Three Self-Evaluation Report (Update Standard One; Add Standard Two)</b> Committee Visit to Review Standards One and Two; Peer-Evaluation Report forwarded to Institution and Board.
5	<b>Standard Three:</b> Planning and Implementation; <b>Standard Four:</b> Effectiveness and Improvement	<b>Year Five Self-Evaluation Report (Update Standards One and Two; Add Standards Three and Four)</b> No Visit; Evaluator Panel Reviews Standards Three and Four; Peer-Evaluation Report forwarded to Institution and Board.
7	<b>Standard Five:</b> Mission Fulfillment, Adaptation, and Sustainability	<b>Year Seven Self-Evaluation Report (Update Standards One, Two, Three, and Four; Add Standard Five)</b> Committee Visit to Review Standards Three, Four, and Five; Peer-Evaluation Report forwarded to Institution and Board.



# Year One Self-Evaluation Report

- Title page to include:
  - Title of Self-Evaluation Report
  - Name of Institution
  - Date Submitted
- Table of Contents
- Institutional Overview [Two (2) pages maximum]
- Preface
  - Brief Update on Institutional Changes Since Last Report
  - Response to Addenda Requested by NWCCU

# Year One Self-Evaluation Report

## Chapter One: *Mission, Core Themes, and Expectations*

- Eligibility Requirements 2 and 3 (Executive Summary)
- Standard 1.A *Mission* to include (3 pages max):
  - Institution's Mission Statement
  - Interpretation of Mission Fulfillment
  - Articulation of Acceptable Extent of Mission Fulfillment
- Standard 1.B *Core Themes*
  - One Section per Core Theme (3 pages max each) to include:
    - Title of the Core Theme
    - Brief Description of the Core Theme
    - Objectives of the Core Theme
    - Indicators of Achievement of Core Theme Objectives
    - Rationale for the Selection of those Indicators
- Conclusion

# Year Three Self-Evaluation Report

- Title page to include:
  - Title of Self-Evaluation Report
  - Name of Institution
  - Date Submitted
- Table of Contents
- Institutional Overview [Two (2) pages maximum]
- Preface
  - Brief Update on Institutional Changes Since Last Report
  - Response to Addenda Requested by NWCCU

# Year Three Self-Evaluation Report

## \*Chapter One: *Mission, Core Themes, and Expectations*

- Eligibility Requirements 2 and 3 (Executive Summary)
- Standard 1.A *Mission* to include (3 pages max):
  - Institution's Mission Statement
  - Interpretation of Mission Fulfillment
  - Articulation of Acceptable Extent of Mission Fulfillment
- Standard 1.B *Core Themes*
  - One Section per Core Theme (3 pages max each) to include:
    - Title of the Core Theme
    - Brief Description of the Core Theme
    - Objectives of the Core Theme
    - Indicators of Achievement of Core Theme Objectives
    - Rationale for the Selection of those Indicators

\*Updated since last report



# Year Three Self-Evaluation Report

## Chapter Two: *Resources and Capacity*

- Eligibility Requirements 4 through 21 (Executive Summary)
- Standard 2.A *Governance*
- Standard 2.B *Human Resources*
- Standard 2.C *Education Resources*
- Standard 2.D *Student Support Resources*
- Standard 2.E *Library and Information Resources*
- Standard 2.F *Financial Resources*
- Standard 2.G *Physical and Technological Infrastructure*
- Conclusion

# Next Steps

- Accreditation Steering Committee (ASC) continues taking feedback on Core Themes, Objectives and Indicators
- Identification of level for Mission Fulfillment
- Draft Report reviewed by campus community
- Identification of leads for each function area for Chapter 2.
- Development of outline for Chapter 2 subreports
- Discussions with departments in Fall

# Comments and Questions

